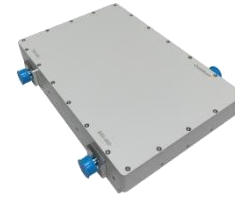


Diplexer LTE800 / GSM900

- Low Passive Inter-modulation 160 dBc
- Low VSWR & Insertion Loss
- High Isolation, Indoor & Outdoor, IP68
- Widely used for In-building Solutions



Specifications

Model No.	HT-DIPLEX-0709-4310F
------------------	-----------------------------

Electrical characteristics

Frequency range Port 1 Port 2	790 – 862 MHz (LTE800) 880 – 960 MHz (GSM900)
Insertion loss	≤ 0.4 dB (typ. 0.25 dB)
VSWR	≤ 1.25 (typ. 1.2)
Isolation	≥ 50 dB (typ. 55dB)
DC by-pass	all inputs → output (unidirectional) max. 1A per input max. 60V DC (AISG Standard, 2.0, § 6.4)
Intermodulation products 3rd order @ 2 x 20 W	≤ -160 dBc typical ≤ -165 dBc
Impedance	50 Ohm
Power Rating	300 W (CW) max. per input port

Mechanical characteristics

Connectors	4.3-10 female
Dimensions, approx. (Excluding brackets and connectors)	279 x 51 x 187 mm (Width x Height x Depth)
Weight, approx.	3.45 kg
Wall / Mast mounting	Part of delivery

Environmental conditions

Class. of environmental conditions	ETSI EN 300019-1-1 Class 1.2 ETSI EN 300019-1-2 Class 2.3 ETSI EN 300019-1-4 Class 4. 1E
Degree of protection	IP 68 (Outdoor)
Operation Ambient temperature range	-40 °C to +65 °C
Storage Ambient temperature range	-40 °C to +85 °C
Relative humidity, max.	95% (non-condensing)
HT Part Code	9528023050

Outline drawing

